

Change Notice G Toggle, GW Paddle Series

Change of G Toggles & GW Paddles LED Specifications

Type of Change:

- Engineering Part Number
- Product Appearance

The G Series Illuminated Toggles and the GW Series Illuminated Paddles will have changes to the LEDs. These changes will affect the illumination of all models, both standard and custom. Differences in the LED specification values are outlined in the table below.



G Toggle



GW Paddle Rocker

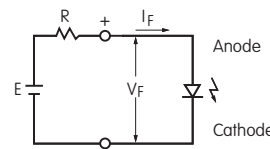
LED COLORS & SPECIFICATIONS

The electrical specifications shown are determined at a basic temperature of 25°C. Lamp circuit is independent of switch operation.

 Single Color	 Bicolor	Before Change				After Change			
		Single Color			Bicolor	Single Color			Bicolor
		C	D	F	CF	C	D	F	CF
Colors		Red	Amber	Green	Red/Green	Red	Amber	Green	Red/Green
Forward Peak Current	I_{FM}	25mA	25mA	25mA	25mA/25mA	30mA	30mA	25mA	30mA/25mA
Continuous Forward Current	I_F	20mA	20mA	20mA	20mA/20mA	20mA	20mA	20mA	20mA/20mA
Forward Voltage	V_F	2.0V	2.1V	2.1V	2.0V/2.1V	2.0V	2.0V	2.1V	2.0V/2.1V
Reverse Peak Voltage	V_{RM}	4V	4V	4V	4V/4V	5V	5V	5V	5V/5V
Current Reduction Rate Above 25°C	ΔI_F	0.33mA/°C				0 - No Current Reduction Rate within Ambient Temperature Range			
Ambient Temperature Range		-25° ~ +55°C				-25° ~ +55°C			

Notes

- LEDs are an integral part of the switch and are not available separately.
- The LED circuit is isolated and requires an external power source.
- If the source voltage exceeds the rated voltage, a ballast resistor is required. The resistor value can be calculated by using the formula shown here.
- The changes to G and GW LEDs do not affect any external dimensions of the switches.
- Contact the factory if further details are needed.



$$R = \frac{E - V_F}{I_F}$$

Where: R = Resistor Value (Ohms)
 E = Source Voltage (V)
 V_F = Forward Voltage (V)
 I_F = Forward Current (A)

Effective Date

Changes to LEDs will be effective with August 2013 production.

NKK SWITCHES
Nihon Kaiheiki Ind. Co., Ltd.

http://www.nikkaiswitches.com E-mail: overseas@nikkai.co.jp

715-1 Unane, Takatsu-ku, Kawasaki-shi, 213-8553 Japan TEL: +81 44 813 8008 FAX: +81 44 813 8038