

Change Notice

G Indicators

Changes to LED Specifications for G Series Indicators

Type of Change:

- Engineering Part Number
- Product Appearance



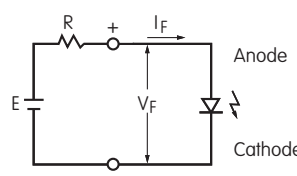
G Series Indicators with Red, Yellow or Green LEDs will Change

The LEDs for G Series Indicators will be changing. This will result in different electrical values for Red and Green LEDs. Although Yellow LEDs will also be replaced, there is no difference in the specifications. The revisions apply to standard and custom indicators. Following are comparisons between the specifications and a table of effected standard part numbers.

CHANGES TO LED SPECIFICATIONS							
Electrical specifications are determined at a basic temperature of 25°C.		Before Change			After Change		
		C	E	F	C	E	F
LED is colored in OFF state	Color	Red	Yellow	Green	Red	Yellow	Green
Maximum Forward Current	I_{FM}	30mA	30mA	25mA	30mA	30mA	30mA
Typical Forward Current	I_F	20mA	20mA	20mA	20mA	20mA	20mA
Forward Voltage	V_F	2.0V	2.1V	2.25V	2.1V	2.1V	2.2V
		$I_F = 20mA$	$I_F = 20mA$	$I_F = 20mA$	$I_F = 20mA$	$I_F = 20mA$	$I_F = 20mA$
Maximum Reverse Voltage	V_{RM}	5V	5V	5V	5V	5V	5V
Current Reduction Rate Above 25°C	ΔI_F	0.40mA/°C	0.40mA/°C	0.33mA/°C	0.40mA/°C	0.40mA/°C	0.40mA/°C
Ambient Temperature Range		-25°C ~ +85°C			-25°C ~ +85°C		

Notes

- The LED circuit is isolated and requires an external power source.
- If the source voltage is greater than the LED's rated voltage, a ballast resistor must be connected in series with the LED. The resistor value can be calculated by using the formula shown here.
- There are no changes to any other specifications or external dimensions.
- Contact the factory if further details are needed.



$$R = \frac{E - V_F}{I_F}$$

Where: R = Resistor Value (Ohms)
 E = Source Voltage (V)
 V_F = Forward Voltage (V)
 I_F = Forward Current (A)

G Indicator Part Numbers					
G01PC	G01PE	G01PF	G01VC	G01VE	G01VF

Effective Date

LED changes for G Series Indicators will be effective April 2019.

NKK SWITCHES CO., LTD. <https://www.nkk.com> E-mail: nkkswitches@nkkswitches.co.jp

715-1 Unane, Takatsu-ku, Kawasaki-shi, 213-8553 Japan TEL: +81 44 813 8001 FAX: +81 44 813 8031