

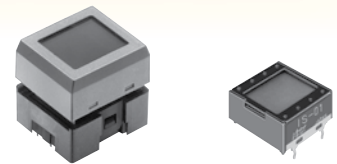
Change Notice

Change of LCD of SmartSwitch 36 x 24 Switches & Displays

Type of Change:

- Engineering Part Number
 Product Appearance

LCD change for IS Series standard size LCD 36 x 24 Switches and Displays with yellow LCD mode and black/white LCD mode.



This change will affect the following products including all custom products, Easy Display Kit & Set.

IS15AACP4CF, IS15ABCP4CF, IS15ABCP4E, IS15ABCP4EF, IS15ABFP4B, IS15ABFP4RGB, IS01BCCF, IS01BCE, IS01BCEF, IS01BFRGB

| Change of LCD | | | | | | | | | |
|--------------------------|--|----------|-------------|----------|--|--------------|-------------|----------|--|
| Outer Shape | Before Change | | | | After Change | | | | |
| | Switch | | Display | | Switch | | Display | | |
| | | | | | | | | | |
| Operating Temp | 0 ~ +40°C | | | | -20 ~ +60°C | | | | |
| Storage Temp | -10 ~ +60°C | | | | -30 ~ +70°C | | | | |
| Operating Voltage | Yellow Mode | B/W Mode | Yellow Mode | B/W Mode | Yellow Mode | B/W Mode | Yellow Mode | B/W Mode | |
| | 7.4V | 7.3V | 7.3V | | 7.3V | | 7.3V | | |
| Handling | Solder profile: 270°C max. for 5 seconds max. When soldering take caution that temperature at the LCD does not exceed 60°C. These products are not process sealed. | | | | LCD Temp Characteristics The contrast and speed of LCDs decrease in environments under 0°C. When operating at temperatures above 60°C the LCD can darken. | | | | |
| | | | | | Solder profile: 270°C max. for 5 seconds max. When soldering take caution that temperature at the LCD does not exceed 70°C. These products are not process sealed. | | | | |

Availability

Change will be effective with December 2010 production.