

Change Notice

UB2 Series

Changes for Super Bright Green LEDs in UB2 Series Pushbuttons & Indicators

Type of Change:

- Engineering Part Number
 Product Appearance



UB2 Series with Super Bright Green LEDs will Undergo Changes

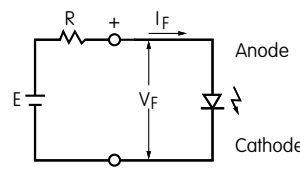
The Super Bright Green LEDs for UB2 Series pushbutton switches and indicators will be changing. Both standard and custom pushbuttons and indicators are included in the revision. The change will effect electrical specifications, which are compared below. It will also effect the LED terminal dimensions and terminal plating, displayed on page 2. Part numbers for effected standard switches and indicators are shown on page 3.

CHANGES TO SPECIFICATIONS FOR SUPER BRIGHT GREEN LED

The electrical specifications shown are determined at a basic temperature of 25°C. Polarity marks are on bottom of switch. The LED is an integral part of the switch and not available separately.		Super Bright LEDs are Electrostatic Sensitive		
		Before Change	6F	After Change
Maximum Forward Current	I_{FM}	30mA		30mA
Typical Forward Current	I_F	20mA		10mA
Forward Voltage	V_F	3.5V		2.9V
		($I_F = 20mA$)		($I_F = 10mA$)
Maximum Reverse Voltage	V_{RM}	5V		5V
Current Reduction Rate Above 25°C	ΔI_F	0.50mA/°C		0.33mA/°C
Ambient Temperature Range		-25°C ~ +50°C		-25°C ~ +50°C

Notes

- The LED circuit is isolated and requires an external power source.
- For best results and safe use of the LEDs, the supply voltage should be more than the LED forward voltage. In addition, an appropriately valued ballast resistor should be used. Without the ballast resistor, the LED will be damaged or destroyed. The resistor value can be calculated by using the formula shown here.
- Contact information is below if more details are needed.



$$R = \frac{E - V_F}{I_F}$$

Where: R = Resistor Value (Ohms)
 E = Source Voltage (V)
 V_F = Forward Voltage (V)
 I_F = Forward Current (A)

Effective Date

Changes for UB2 Series Illuminated Pushbuttons and Indicators with Super Bright Green LEDs will be effective October 2023.

NKK SWITCHES EUROPE GMBH

Alfred-Herrhausen-Allee 3-5, 65760 Eschborn, Germany
 Tel: +49 61 96 400 189
 Web: www.nkkswitches.eu E-mail: contact@nkkswitches.eu

Change Notice

UB2 Series

Changes for Super Bright Green LEDs in UB2 Series Pushbuttons & Indicators

CHANGES TO TERMINALS & TERMINAL PLATING		
Model	Before Change	After Change
<p>Snap-in Mount with Solder Lug Terminals</p> <p>Code 01</p>		
<p>PC Mount with Straight PC Terminals</p> <p>Code 03</p>		
Terminal Plating	Tin	Silver

Notes Illustrations represent UB2 double pole illuminated pushbuttons. Single poles switches do not have terminals 4, 5 and 6. UB2 indicators do not have terminals 1 through 6. Dimensions are in metric/inch.

NKK SWITCHES EUROPE GMBH

Alfred-Herrhausen-Allee 3-5, 65760 Eschborn, Germany

Tel: +49 61 96 400 189

Web: www.nkkswitches.eu E-mail: contact@nkkswitches.eu

Changes for Super Bright Green LEDs in UB2 Series Pushbuttons & Indicators

EFFECTED STANDARD PART NUMBERS FOR UB2 SWITCHES			FOR UB2 INDICATORS
UB215KKG016F	UB216KKW016F-2B	UB225SKW036F	UB201KW036F
UB215KKG016F-1JB	UB216KKW016F-3JB	UB225SKW036F-1JB	UB201KW036F-1JB
UB215KKG016F-2B	UB216SKG036F	UB225SKW036F-2B	UB201KW036F-2B
UB215KKG016F-3JB	UB216SKG036F-1JB	UB225SKW036F-3JB	UB201KW036F-3JB
UB215KKW016F	UB216SKG036F-2B	UB226KKG016F	UB204KW036F
UB215KKW016F-1JB	UB216SKG036F-3JB	UB226KKG016F-1JB	UB204KW036F-1JB
UB215KKW016F-2B	UB216SKW036F	UB226KKG016F-2B	UB204KW036F-2B
UB215KKW016F-3JB	UB216SKW036F-1JB	UB226KKG016F-3JB	UB204KW036F-3JB
UB215SKG036F	UB216SKW036F-2B	UB226KKW016F	
UB215SKG036F-1JB	UB216SKW036F-3JB	UB226KKW016F-1JB	
UB215SKG036F-2B	UB225KKG016F	UB226KKW016F-2B	
UB215SKG036F-3JB	UB225KKG016F-1JB	UB226KKW016F-3JB	
UB215SKW036F	UB225KKG016F-2B	UB226SKG036F	
UB215SKW036F-1JB	UB225KKG016F-3JB	UB226SKG036F-1JB	
UB215SKW036F-2B	UB225KKW016F	UB226SKG036F-2B	
UB215SKW036F-3JB	UB225KKW016F-1JB	UB226SKG036F-3JB	
UB216KKG016F	UB225KKW016F-2B	UB226SKW036F	
UB216KKG016F-1JB	UB225KKW016F-3JB	UB226SKW036F-1JB	
UB216KKG016F-2B	UB225SKG036F	UB226SKW036F-2B	
UB216KKG016F-3JB	UB225SKG036F-1JB	UB226SKW036F-3JB	
UB216KKW016F	UB225SKG036F-2B	---	
UB216KKW016F-1JB	UB225SKG036F-3JB	---	

Effected part numbers include standard part numbers combined with any cap type or color.
 Effected part numbers also include standard part numbers with UL or cULus approvals.

NKK SWITCHES EUROPE GMBH

Alfred-Herrhausen-Allee 3-5, 65760 Eschborn, Germany
 Tel: +49 61 96 400 189
 Web: www.nkkswitches.eu E-mail: contact@nkkswitches.eu