

Change Notice

M2100 Series

Change to Green LED Specifications for M2100 Toggles & Rockers

Type of Change:

- Engineering Part Number
 Product Appearance



M2100 Series

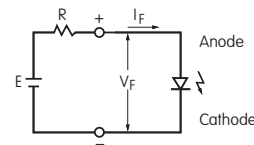
1. The M2100 Toggles and Rockers will have changes to the specifications for Green (F) LEDs. The changes will effect all of the switches, both standard and custom. The specification changes are outlined below, followed by effected standard part numbers.

LED Color & Specifications

The electrical specifications shown are determined at a basic temperature of 25°C. The LED is an integral part of the switch and is not available separately.		Before Change	After Change
		Green F	Green F
Maximum Forward Current	I_{FM}	30mA	30mA
Typical Forward Current	I_F	20mA	20mA
Forward Voltage	V_F	2.1V	2.2V
Maximum Reverse Voltage	V_{RM}	4V	4V
Current Reduction Rate Above 25°C	ΔI_F	0.40 mA/°C	0.38 mA/°C
Ambient Temperature Range		-10 ~ +55 °C	-10 ~ +55 °C

Notes

- The LED circuit is isolated and requires an external power source.
- If the source voltage exceeds the rated voltage, a ballast resistor is required. The resistor value can be calculated by using the formula shown here.
- The changes to LED specifications do not effect any external dimensions of the switches.
- Contact the factory if further details are needed.



$$R = \frac{E - V_F}{I_F}$$

Where: R = Resistor Value (Ohms)
 E = Source Voltage (V)
 V_F = Forward Voltage (V)
 I_F = Forward Current (A)

M2100 TOGGLES EFFECTED BY REVISIONS

M2112LFW01/M	M2112LFW02/M	M2112LFW03/M	M2112LFG30
M2112TFW01/M	M2112TFW02/M	M2112TFW03/M	M2112TFG30
M2113LFW01/M	M2113LFW02/M	M2113LFW03/M	M2113LFG30
M2113TFW01/M	M2113TFW02/M	M2113TFW03/M	M2113TFG30

M2100 ROCKERS EFFECTED BY REVISIONS

M2112NFW01	M2112NFW02	M2112NFW03	M2112NFW13	M2112NFG30
M2112RFW01	M2112RFW02	M2112RFW03	M2112RFW13	M2112RFG30
M2113NFW01	M2113NFW02	M2113NFW03	M2113NFW13	M2113NFG30
M2113RFW01	M2113RFW02	M2113RFW03	M2113RFW13	M2113RFG30

Effective Date

Changes to Green (F) LED for M2100 Series will be effective November 2016.

NKK SWITCHES CO., LTD. <http://www.nkk.com> E-mail: nkkswitches@nkkswitches.co.jp

715-1 Unane, Takatsu-ku, Kawasaki-shi, 213-8553 Japan TEL: +81 44 813 8001 FAX: +81 44 813 8031

Change Notice

M2100 Series

Change to Red & Yellow LED Specifications for M2100 Toggles & Rockers

Type of Change:

- Engineering Part Number
 Product Appearance



M2100 Series

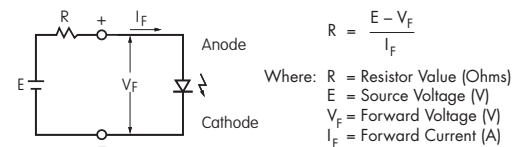
2. The M2100 Toggles and Rockers will have changes to the specifications for Red (C) and Yellow (E) LEDs. The changes will effect all of the switches, both standard and custom. The specification changes are outlined below, followed by effected standard part numbers.

LED Colors & Specifications

The electrical specifications shown are determined at a basic temperature of 25°C. The LED is an integral part of the switch and is not available separately.		Before Change		After Change	
		Red C	Yellow E	Red C	Yellow E
Maximum Forward Current	I_{FM}	25mA	30mA	30mA	30mA
Typical Forward Current	I_F	20mA	20mA	20mA	20mA
Forward Voltage	V_F	2.1V	2.1V	2.2V	2.1V
Maximum Reverse Voltage	V_{RM}	4V	4V	4V	4V
Current Reduction Rate Above 25°C	ΔI_F	0.33 mA/°C	0.40 mA/°C	0.38 mA/°C	0.38 mA/°C
Ambient Temperature Range		-10 ~ +55 °C	-10 ~ +55 °C	-10 ~ +55 °C	-10 ~ +55 °C

Notes

- The LED circuit is isolated and requires an external power source.
- If the source voltage exceeds the rated voltage, a ballast resistor is required. The resistor value can be calculated by using the formula shown here.
- The changes to LED specifications do not effect any external dimensions of the switches.
- Contact the factory if further details are needed.



Effective Date

Changes to Red (C) and Yellow (E) LEDs for M2100 Series will be effective March 2017.

NKK SWITCHES CO., LTD. <http://www.nkk.com> E-mail: nkkswitches@nkkswitches.co.jp

715-1 Unane, Takatsu-ku, Kawasaki-shi, 213-8553 Japan TEL: +81 44 813 8001 FAX: +81 44 813 8031

Change Notice

M2100 Series

Change to Red & Yellow LED Specifications for M2100 Toggles & Rockers

M2100 TOGGLES EFFECTED BY REVISIONS

M2112LCW01/M	M2112LCW02/M	M2112LCW03/M	M2112LCG30
M2112LEW01/M	M2112LEW02/M	M2112LEW03/M	M2112LEG30
M2112TCW01/M	M2112TCW02/M	M2112TCW03/M	M2112TCG30
M2112TEW01/M	M2112TEW02/M	M2112TEW03/M	M2112TEG30
M2113LCW01/M	M2113LCW02/M	M2113LCW03/M	M2113LCG30
M2113LEW01/M	M2113LEW02/M	M2113LEW03/M	M2113LEG30
M2113TCW01/M	M2113TCW02/M	M2113TCW03/M	M2113TCG30
M2113TEW01/M	M2113TEW02/M	M2113TEW03/M	M2113TEG30

M2100 ROCKERS EFFECTED BY REVISIONS

M2112NCW01	M2112NCW02	M2112NCW03	M2112NCW13	M2112NCG30
M2112NEW01	M2112NEW02	M2112NEW03	M2112NEW13	M2112NEG30
M2112RCW01	M2112RCW02	M2112RCW03	M2112RCW13	M2112RCG30
M2112REW01	M2112REW02	M2112REW03	M2112REW13	M2112REG30
M2113NCW01	M2113NCW02	M2113NCW03	M2113NCW13	M2113NCG30
M2113NEW01	M2113NEW02	M2113NEW03	M2113NEW13	M2113NEG30
M2113RCW01	M2113RCW02	M2113RCW03	M2113RCW13	M2113RCG30
M2113REW01	M2113REW02	M2113REW03	M2113REW13	M2113REG30

NKK SWITCHES CO., LTD. <http://www.nkk.com> E-mail: nkkswitches@nkkswitches.co.jp

715-1 Unane, Takatsu-ku, Kawasaki-shi, 213-8553 Japan TEL: +81 44 813 8001 FAX: +81 44 813 8031