

Change Notice EB, M, MB2400, MB2500 Series

Change to AT617F LED Specifications for EB, MB2400, MB2500 Pushbuttons & M Rockers & Paddles



EB Pushbutton


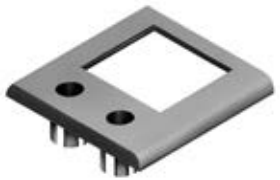
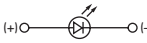
Type of Change:

- Engineering Part Number
- Product Appearance

There will be a change to the specifications for AT617F, the green single element LED. This will effect EB, MB2400 and MB2500 Series snap-in mount pushbuttons and M Series snap-in mount rockers and paddles, all of which feature the AT212 LED bezel for 2 round LEDs. The revision will effect all standard and custom part numbers from these series with AT617F and AT212 bezel.

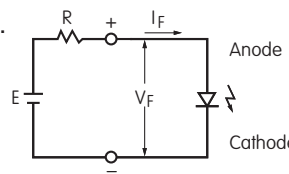
CHANGE TO SPECIFICATIONS FOR AT617F LED

Electrical specifications are determined at a basic temperature of 25°C. Lamp circuit is independent of switch operation.

		Before Change	After Change
 			
	Color	F Green	F Green
	Maximum Forward Current	I_{FM} 25mA	25mA
	Typical Forward Current	I_F 20mA	20mA
	Forward Voltage	V_F 2.2V ($I_F = 20mA$)	2.25V ($I_F = 20mA$)
	Maximum Reverse Voltage	V_{RM} 5V	5V
	Current Reduction Rate Above 25°C	ΔI_F 0.33mA/°C	0.33mA/°C
	Ambient Temperature Range	-15°C ~ +70°C	-15°C ~ +70°C

Notes

- The LED circuit is isolated and requires an external power source.
- If the source voltage exceeds rated voltage, a ballast resistor is required. The resistor value can be calculated by using the formula shown here.
- After the change, AT617F LED color will be different in ON state than the LED before the change in ON state.
- There are no changes to the Red (C) or Yellow (E) LEDs.
- There are no changes to any other specifications or dimensions.
- Contact factory if further details are needed.



$$R = \frac{E - V_F}{I_F}$$

Where: R = Resistor Value (Ohms)
 E = Source Voltage (V)
 V_F = Forward Voltage (V)
 I_F = Forward Current (A)

PART NUMBERS EFFECTED BY CHANGES TO AT617F LED

EB snap-in mount pushbuttons with AT617F round LED and AT212 bezel (any color)

M snap-in mount rockers and paddles with AT617F round LED and AT212 bezel (any color)

MB2400 snap-in mount pushbuttons with AT617F round LED and AT212 bezel (any color)

MB2500 snap-in mount pushbuttons with AT617F round LED and AT212 bezel (any color)

Effective Date

Changes to AT617F LEDs will be effective February 2017.

NKK SWITCHES CO., LTD. <http://www.nkk.com> E-mail: nkkswitches@nkkswitches.co.jp

715-1 Unane, Takatsu-ku, Kawasaki-shi, 213-8553 Japan TEL: +81 44 813 8001 FAX: +81 44 813 8031