

Change Notice

JL Series

Change to JL Tactiles LED Specifications

Type of Change:

- Engineering Part Number
 Product Appearance



LED Changes for JL Illuminated Tactiles

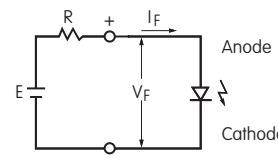
The JL Illuminated Tactiles will have a change to the LED specifications for Red, Amber and Green. The change will effect all illuminated models, both standard and custom. The specification changes are outlined below, followed by effected standard part numbers.

LED COLORS & SPECIFICATIONS

LEDs are an integral part of the switch. The electrical specifications shown are determined at a basic temperature of 25°C.		Before Change			After Change			
Red LED Model - 6 LEDs 	1-color, 1-element LEDs grouped in arrays of 6 or 8.	C	D	F	C	D	F	
	Color	Red	Amber	Green	Red	Amber	Green	
Amber & Green Models - 8 LEDs 	Maximum Forward Current	I_{FM}	75mA	100mA	100mA	90mA	120mA	120mA
	Typical Forward Current	I_F	60mA	80mA	80mA	60mA	80mA	80mA
	Forward Voltage	V_F	4.0V	4.2V	4.2V	3.9V	4.0V	4.2V
	Maximum Reverse Voltage	V_{RM}	8V	8V	8V	10V	10V	10V
	Current Reduction Rate Above 25°C	ΔI_F	0.98mA/°C	1.31mA/°C		1.2mA/°C	1.6mA/°C	
	Ambient Temperature Range		-25°C ~ +50°C			-25°C ~ +50°C		

Notes

- The LED circuit is isolated and requires an external power source.
- If the source voltage exceeds the rated voltage, a ballast resistor is required. The resistor value can be calculated by using the formula shown here.
- The changes to LED specifications do not effect any external dimensions of the switches.
- Contact the factory if further details are needed.



$$R = \frac{E - V_F}{I_F}$$

Where: R = Resistor Value (Ohms)
 E = Source Voltage (V)
 V_F = Forward Voltage (V)
 I_F = Forward Current (A)

JL PART NUMBERS EFFECTED BY LED SPECIFICATION CHANGES

JL15SKSBCP2	JL15SKSBDP2	JL15SKSBFP2
JL15LSKSCCP2	JL15SKSDDP2	JL15SKSFFP2

Effective Date

Changes to JL Tactiles LEDs will be effective April 2016.

NKK SWITCHES CO., LTD. <http://www.nkk.com> E-mail: nkkswitches@nkkswitches.co.jp

715-1 Unane, Takatsu-ku, Kawasaki-shi, 213-8553 Japan TEL: +81 44 813 8001 FAX: +81 44 813 8031